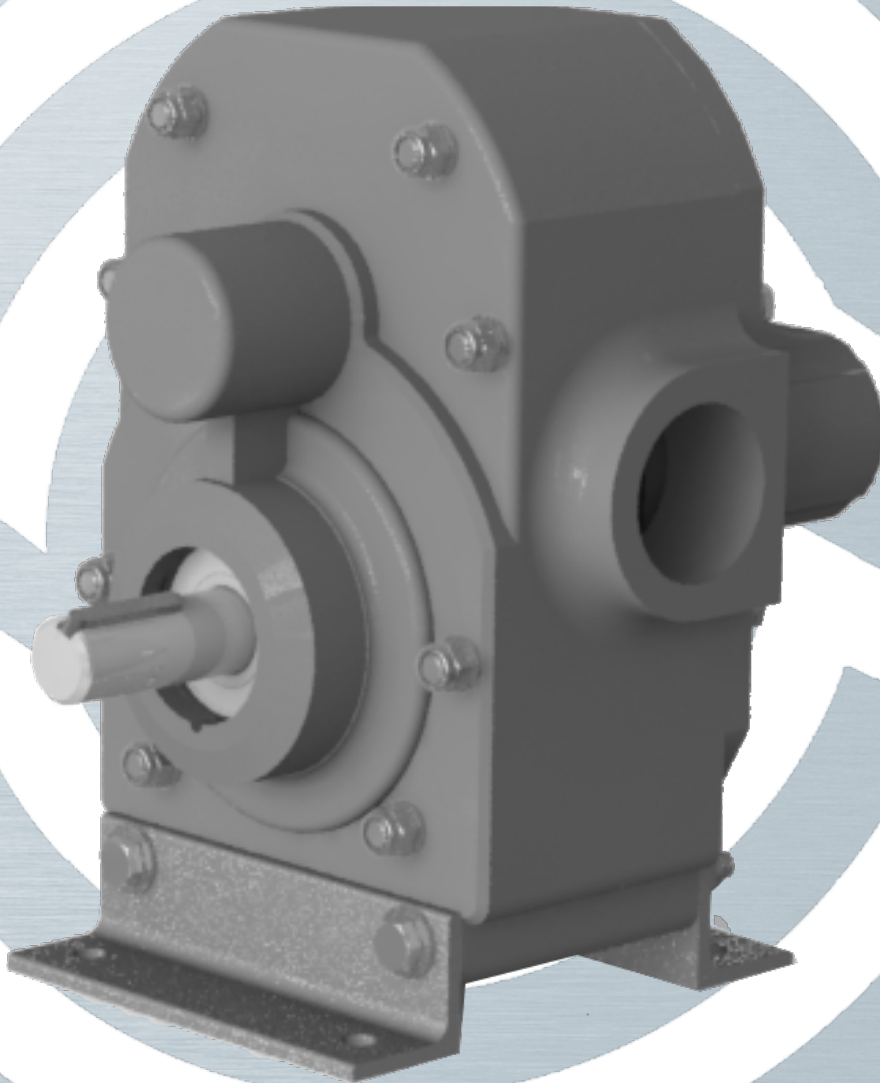


GP: Plastic Pump



## G: Gear type pump range

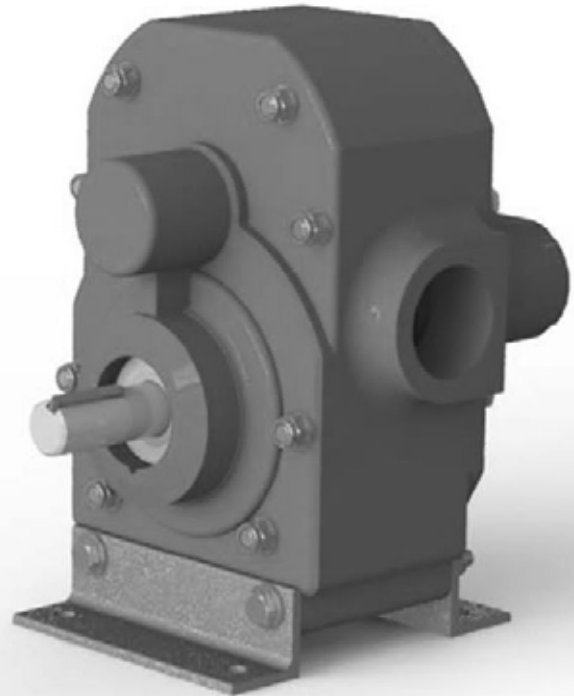
### G: P Style:



Materials: **PU**

### Plastic pumps

The GP range is made from reinforced plastic casings, and is suitable for a maximum pumping temperature of 80°C. The P range pumps are used in the feed industry on acidic fats, molasses in the sugar and in paper industries. Offering an economical solution, these highly versatile pumps are also used for transferring molasses and for spraying a variety of fluids in the farming industry and can be used in chemical industries.



Albany's 24-page brochure is available as a download at [www.albany-pumps.co.uk](http://www.albany-pumps.co.uk)



Maximum working pressure <b>7 barg</b>	Pump size range <b>1 1/4" - 2"</b>	Maximum temperature <b>80°C</b>	Flow rate <b>50-550 L/min</b>
--	------------------------------------	---------------------------------	-------------------------------

AL Aluminium | CS Cast Steel | CI Cast Iron | GM Gunmetal | HY Hastelloy | NR Ni-resist | NY Nylon | PP Polypropylene | SD Super Duplex | SS Stainless Steel  
 General and Chemical Bitumen Fire Dispenser Machines Food Industry Lubrication Marine Oil & Gas Refrigeration Sugar

[www.albany-pumps.co.uk](http://www.albany-pumps.co.uk)

+44 (0) 1594 842 275

[sales@albany-pumps.co.uk](mailto:sales@albany-pumps.co.uk)

### Head Office and Manufacturing Centre

Albany Engineering Company Ltd  
 Church Road, Lydney  
 Gloucestershire, GL15 5EQ  
 United Kingdom

t: +44 (0) 1594 842 275  
 Head Office Option 1

e: [sales@albany-pumps.co.uk](mailto:sales@albany-pumps.co.uk)



### Features

- Composite Construction
- PU Shore D 75 housing
- Reinforced with Stainless Steel
- Excellent Corrosion Resistance
- Good Abrasion Resistance
- Lightweight
- Simple Design
- Cost Effective
- Various Options

### Applications

- Sugar industry: molasses, blackstrap, syrup, glucose
- Paper Industry: Soap sulphate, fatty esters, tallow and tall oil
- Agriculture: Farm effluent, liquid animal feeds and molasses
- Mariculture: fish oils, cod liver oil, halibut liver oil, fish proteins, sperm oil,
- soft wastes
- Chemical Industry – oils, polymers, acids
- Many others – flavours, fragrances, chocolate, cocoa butter, edible oils

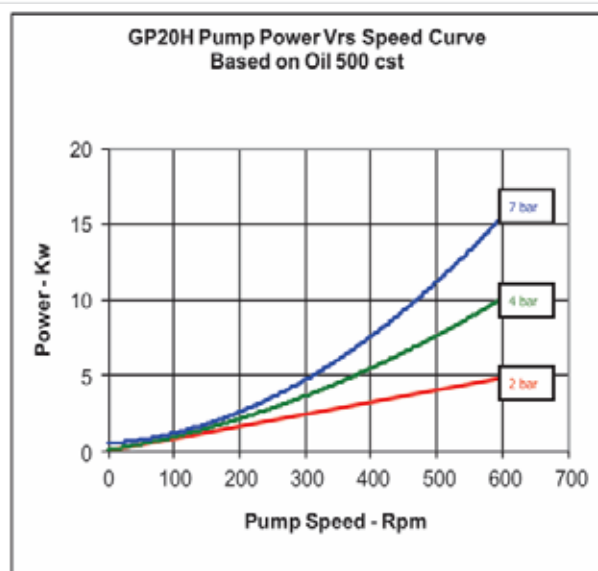
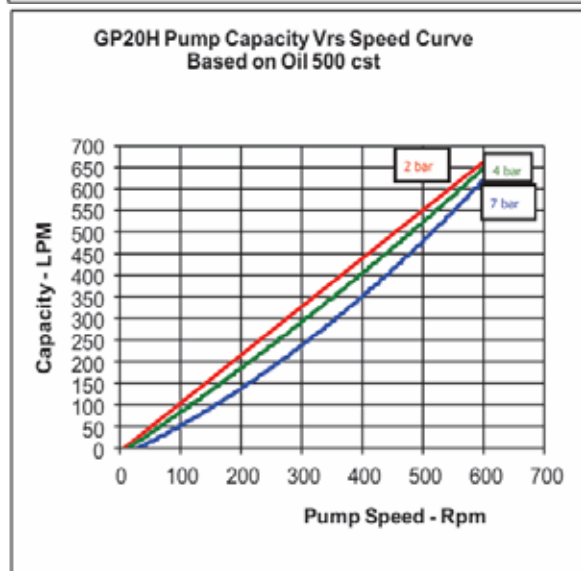
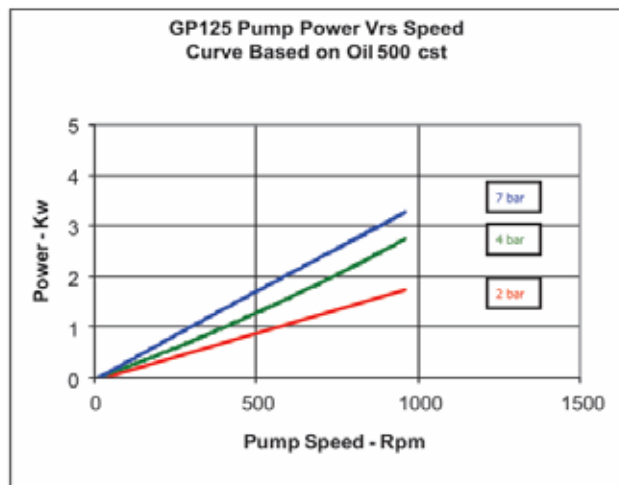
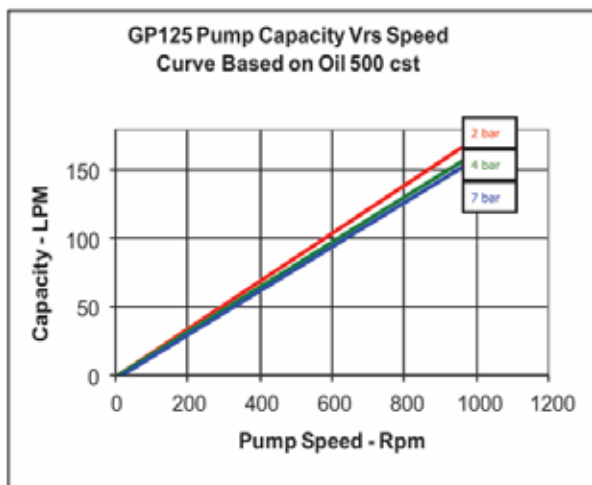
Maximum working pressure **7 barg**

Pump size range **1 1/4" - 2"**

Maximum temperature **80°C**

Flow rate **50-550 L/min**

### Performance

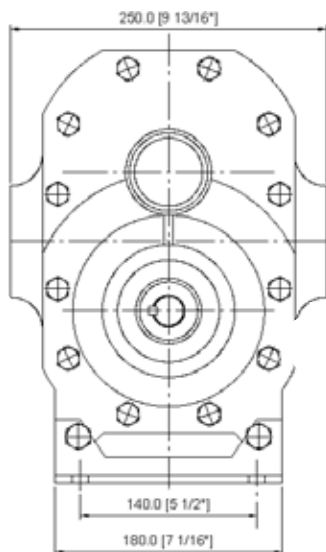


### Specifications (standard materials of construction)

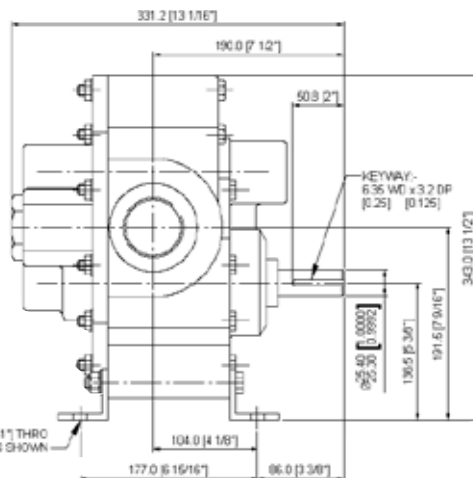
Pump Frame Size	GP125	GP20H
Housing	PU Shore D 75	PU Shore D 75
Gears	Quadrant Nylatron GSM Black/ MC901 Blue	Quadrant Nylatron GSM Black/.MC901 Blue
Shafts	Stainless Steel 316	Stainless Steel 316
Bearings	Bronze	Bronze
Ports	1 1/4" BSP Female	2" BSP Female
Speed Range RPM	0-950 RPM	0-550 RPM
Temperature range	-40 – +80°C	-40 – +80°C
Seals	Lip Seal	Mechanical Seal in Viton



## G: P Style:

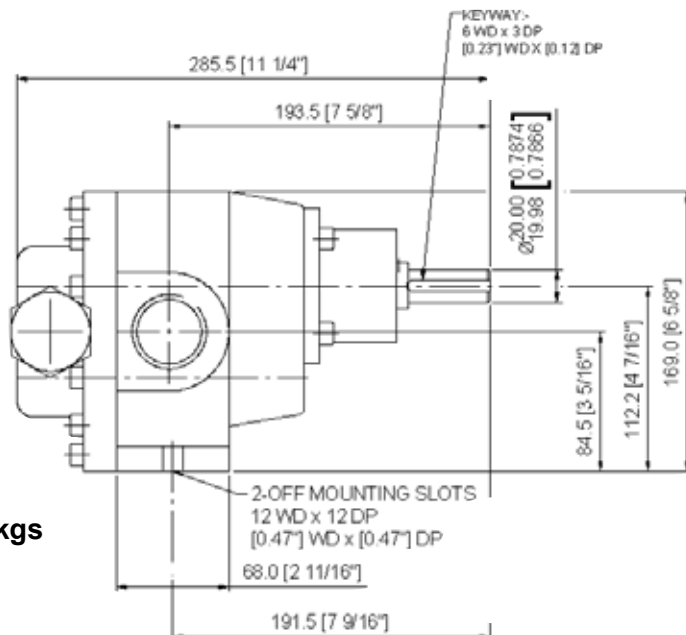
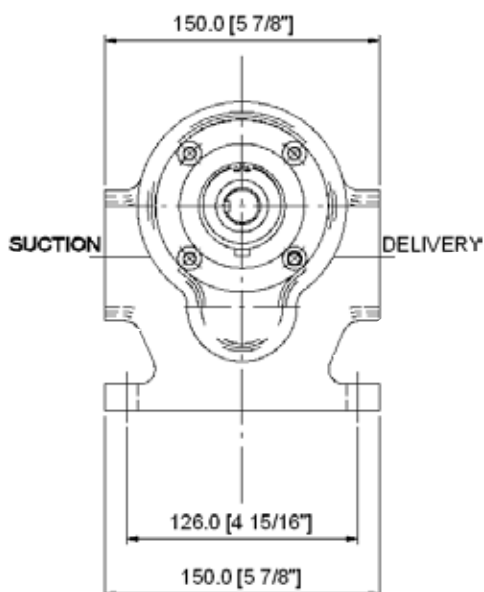


**Model GP20H**



**Shipping Weight 45 lbs – 21 kgs**

**Model GP125**



**Shipping Weight 12lbs – 5.5kgs**

## G: P Style:

We support obsolete FF style pumps with spares and a repair service for installed pumps. FF pumps have been replaced by new P style pump.

Do not hesitate to contact us to discuss tailoring the P style pump to suit your individual application. We are always ready to discuss customisation of our products.

**OTHER CORROSION RESISTANT PUMPS FROM ALBANY INCLUDE GUNMETAL, HASTELLOY, STAINLESS STEEL AND SUPER DUPLEX.**

**SEE OUR GENERAL BROCHURE FOR DETAILS.**

