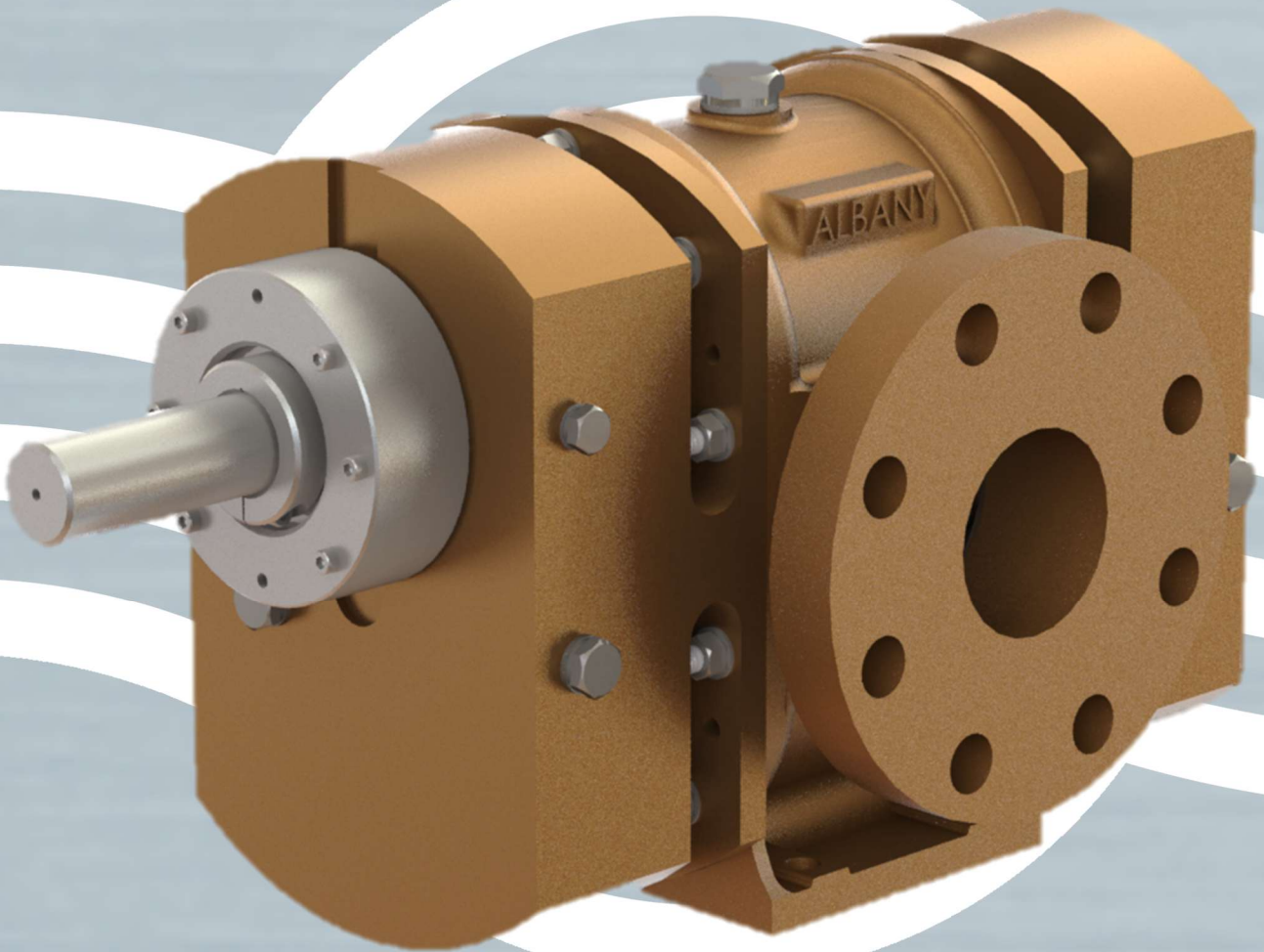


GF: Certified Foam Pump



G: Gear type pump range

Albany Pumps

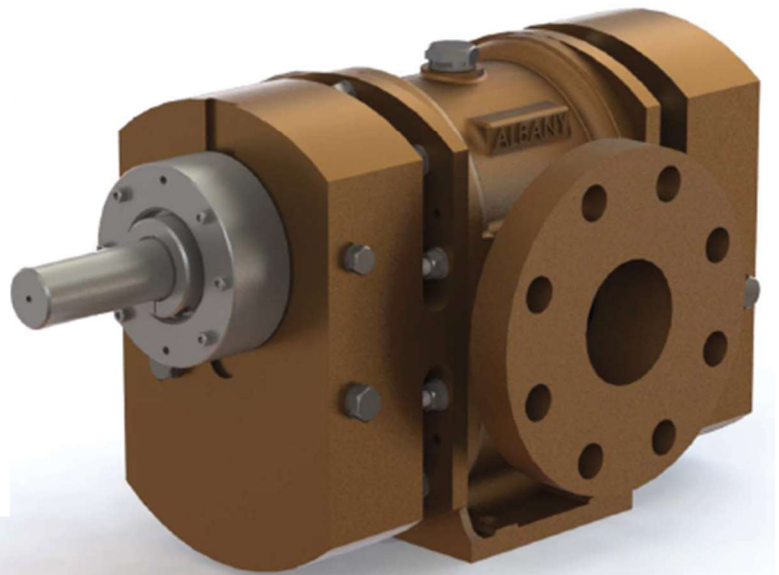
G: F Style:



3.1 certified Fire/foam pumps

As with the GE range, the GF range is primarily with a foam concentrate pump, the difference being with these pumps are designed for liquids of a lower viscosity. Pumps can be tested on lower viscosity liquids including water for up to 30 hours before foam use, with dry Lip seal shaft sealing. The pump is capable of dry running (will surpass industry requirement). Available as pump only unit or mounted on a baseplate coupled to a prime mover.

In order to meet water test requirements, prior to use, the bearings, rotors and shafts in the pump have been significantly adjusted to suit these applications.



Albany's 24-page brochure is available as a download at www.albany-pumps.co.uk



Maximum working pressure 18 barg	Pump size range 1 1/4" - 3"	Maximum temperature 80°C	Flow rate 65-1300 L/min
----------------------------------	-----------------------------	--------------------------	-------------------------

www.albany-pumps.co.uk +44 (0) 1594 842 275

Head Office and Manufacturing Centre

Albany Engineering Company Ltd
Church Road, Lydney
Gloucestershire, GL15 5EQ
United Kingdom
t: +44 (0) 1594 842 275
Head Office Option 1
e: salesdept@albany-pumps.co.uk

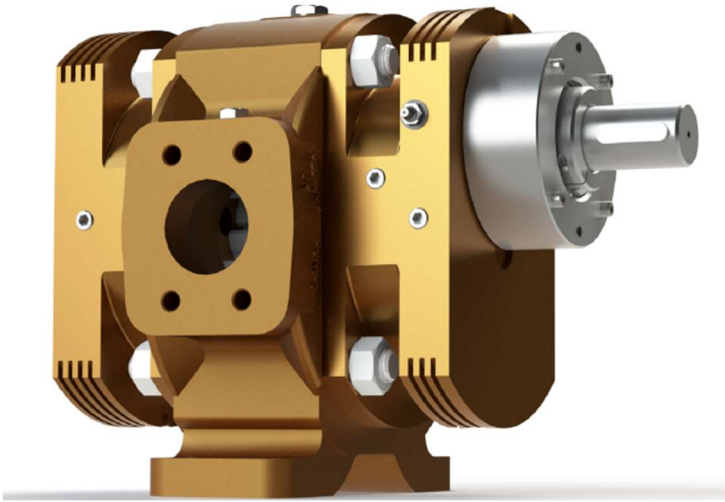
Service and Repair Centre

Albany Engineering Company Ltd
Richter Works, Garnett Street
Bradford BD3 9HB
United Kingdom
t: +44 (0) 1594 842 275
Service and Repair (Option 2).
e: servicedept@albany-pumps.co.uk



Albany Pumps

G: F Style:



- Foam concentrate injection pumps
- Foam transfer pumps

Albany F Range has been developed after learning that both the environmental and economic impact of testing systems on foam. With water widely being used as a client preference to test the system, we have developed our F-Style pump to overcome the adverse wear to the internals of a positive displacement pump proving critical when relied upon to tackle an emergency.

CONSTRUCTION:

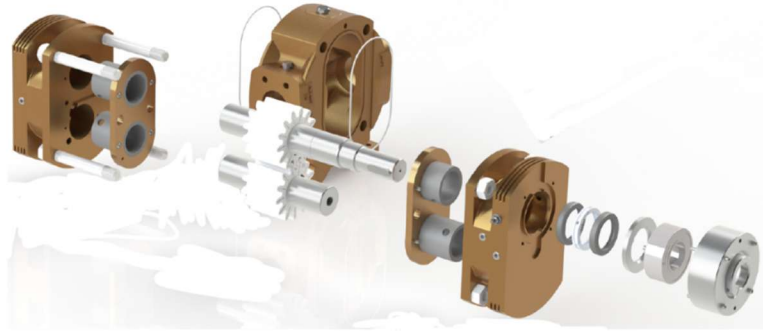
PUMP CASING:	Gunmetal Cast.
ROTORS:	Engineered Polymer
SHAFTS:	Stainless Steel.
BEARINGS:	Carbon
SHAFT SEALING:	Double lip-seal arrangement.
REVERSIBLE:	Flow in one direction only.



- NFPA 20: Albany pumps can be supplied to comply with the latest standard.
- Pumps can be ran dry for 10 minutes. For 30-hour water testing before foam use, use the GF style pump.

www.albany-pumps.co.uk +44 (0) 1594 842 275





• DRIVES

When pumps are fitted to tender vehicles, Drive is normally from PTO but may be via Hydraulic motor or a separate engine. Fixed Installations normally employ electric motors or Diesel engine drives. However, there is an increasing preference for water turbine drives for foam concentrate pumps, which Albany cover with their Pelton units.

• APPROVALS – QA

Albany holds BS EN ISO 9001 approval. World-wide, many installations of it pumps Fulfil rigorous test & service conditions. We Meet the QA documentation requirements Of the oil and gas industry.

• TESTING

All Albany pumps are performance tested to Ensure they meet the customers specification.

• THIXOTROPIC FOAM CONCENTRATES

Albany pumps will handle thixotropic foam liquids. Pumps may be run at normal fixed pole speeds, as the shear rate within the inlet pipe and pump is sufficient to reduce viscosities. Suction lines should be as short as possible and of generous diameter since some of these liquids have a high resistance to flow.

• DOCUMENTATION

Customised documentation can be provided for customers when required.

• SPARES

Spares are held for all standard pumps. Please contact for details and prices, quoting the serial number stamped on the body.

PUMP FRAME SIZE	STANDARD BRANCH SIZE	RPM	EXAMPLE @ 10 BAR (G)				EXAMPLE @ 16 BAR(G)			
			LPM	USGPM	KW	HP	LPM	USGPM	KW	HP
GF AP090 (F1)	1 1/2" ANSI	1450	100.7	26.6019	2.4	3.216	93.8	24.779146	3.7	4.958
GF AP110 (F2)	2" ANSI	1450	258	68.1559	12.4	16.616	248	65.51416	15.3	20.502
GF HD050 (F3)	2 1/2" ANSI	1450	541	142.916	16.6	22.244	520	137.3684	23.4	31.356
HF-HD080 (F4)	3" ANSI	1450	1106	292.172	36.1	48.374	1080	285.3036	56.9	76.246

www.albany-pumps.co.uk +44 (0) 1594 842 275

Head Office and Manufacturing Centre

Albany Engineering Company Ltd
Church Road, Lydney
Gloucestershire, GL15 5EQ
United Kingdom

t: +44 (0) 1594 842 275
Head Office Option 1

e: salesdept@albany-pumps.co.uk

Service and Repair Centre

Albany Engineering Company Ltd
Richter Works, Garnett Street
Bradford BD3 9HB
United Kingdom

t: +44 (0) 1594 842 275
Service and Repair (Option 2).

e: servicedept@albany-pumps.co.uk